

Offenes Produktions Unterstützungs System



Clever bits working for you!



OPUS Entwicklungs und Vertriebs GmbH

Wilhelm-Raabe-Str. 4, D-73230 Kirchheim/Teck
Tel.: 07021 - 4 94 10, Fax: 07021 - 4 91 19
info@opus-cam.de, www.opus-cam.de

Technische Änderungen vorbehalten OPUS ges_0808



Clever bits working for you!



Clever bits working for you!



OPUS - the company and the team

OPUS - a story of success

OPUS belongs to the leading CAM systems in the German-speaking area and also takes a top position in IT and application technic as well as in market share.

The company was founded in 1980. Since that date -a remarkable long time for a software company- we constantly extended and optimized our product in the environment of the very active CNC market. All new trends and challenges are a motivation for us to improve our product.

Openness - an OPUS policy

Open Production Supporting System (in German: „Offenes Produktions Unterstützung System“: you will find our idea already in our company name. Openness is a dominating feature of our company. Especially in our CAM software

itself, but also in dealing with our customers and our partner firms, with our distributors and certainly with our OPUS employees.

The OPUS team

Most of the OPUS IT engineers and CNC sepcialists are part of the company for a very long time, some even from the start. This brings us the essential



the CEOs of OPUS: Ralf Weissinger and Roland Aukschlatt

continuity in the development of our software components. At the same time it is an expression of the extremely high identification of the OPUS team with its product and company.

The OPUS System Center

Also in the distribution organization OPUS lives the openness: the software company from Kirchheim-Teck develops the OPUS software kernel modules and the local OPUS system centers adapt and customize the CAM software to the needs of the customer and his workflow. An approved concept which secures our proximity to the market and enforces dynamics and movement.



The OPUS team.

Many of them are part of the team from the beginning. And all of them are skilled in software engineering and are also application specific up to date.

OPUS - the perfect CAM solution for you



program creation by the programmer.

Customizing

The NC program creation can be adapted in OPUS to individual programming techniques and to specific requirements. Once created programming routines will bring you a great time saving in programming.

Full access to everything

Unlike many CAM programs OPUS enables you to access all parts and components of the software by the program's own programming language SESAM. You can program adaptations to the software by yourself or your local OPUS partner will do this for you.

The result counts

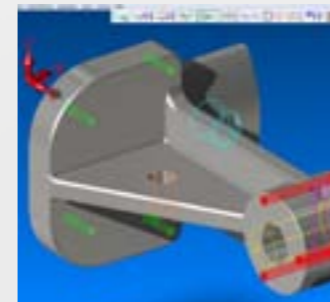
At the end of the day no enervated NC specialists, but all planned NC programs were created in an effective and focused way and were transmitted to the CNC machines in manufacturing. That's the way it should be! The output has to be correct, and the highly skilled NC professionals shouldn't get tired during program creation.

Consistent intuitive handling

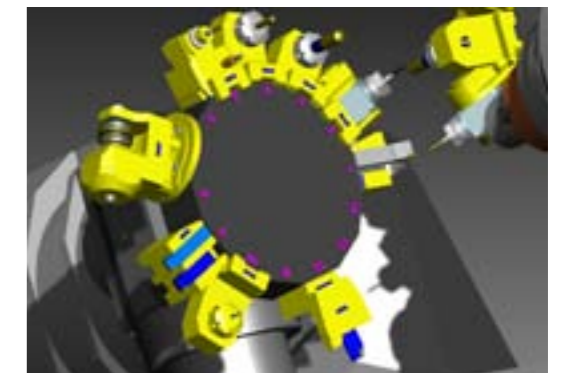
The intelligent user interface of OPUS ensures this. In all program modules, the user interface with easy to understand symbols and icons is made uniform. Context-sensitive help files inform you quickly and clearly about the current state and the next steps.

Photorealistic illustration

You always have a full overview in a perfect 3D spatial representation, thanks to modern HOOPS technology. This means a safe optical control during



Clear dialogue menus and understandable representations



It is important to be able to safely evaluate the NC program in each phase. In OPUS in photorealistic 3D view, thanks to modern HOOPS technology.

Clever bits working for you!



OPUS ... open for every input

Every data must get in!

OPUS can conveniently import all design data from 2D paper drawings up to 3D CAD data of the most common CAD programs via powerful interfaces - a basic requirement for integrated CAM workflow.

Full integration of workflows

OPUS with its consistently open concept is easy to integrate into any existing CAM manufacturing organization.

And with OPUS you do not only create your NC programs in a particularly efficient manner, with OPUS you manage a complete integration of your CAM workflows.

Everything under control

The OPUS modules for NC machining, for managing your projects, for your tool database, for DNC / MDE and the OPUS simulation concept are carefully matched, allowing you a central, efficient and

prompt resources and production planning.

Benefit savings potential

OPUS users report savings potential of up to 70% and a payback of the investment cost of one single CNC machine in the „OPUS“ mode already after a few weeks!

OPUS ... open for every output

OPUS addresses all

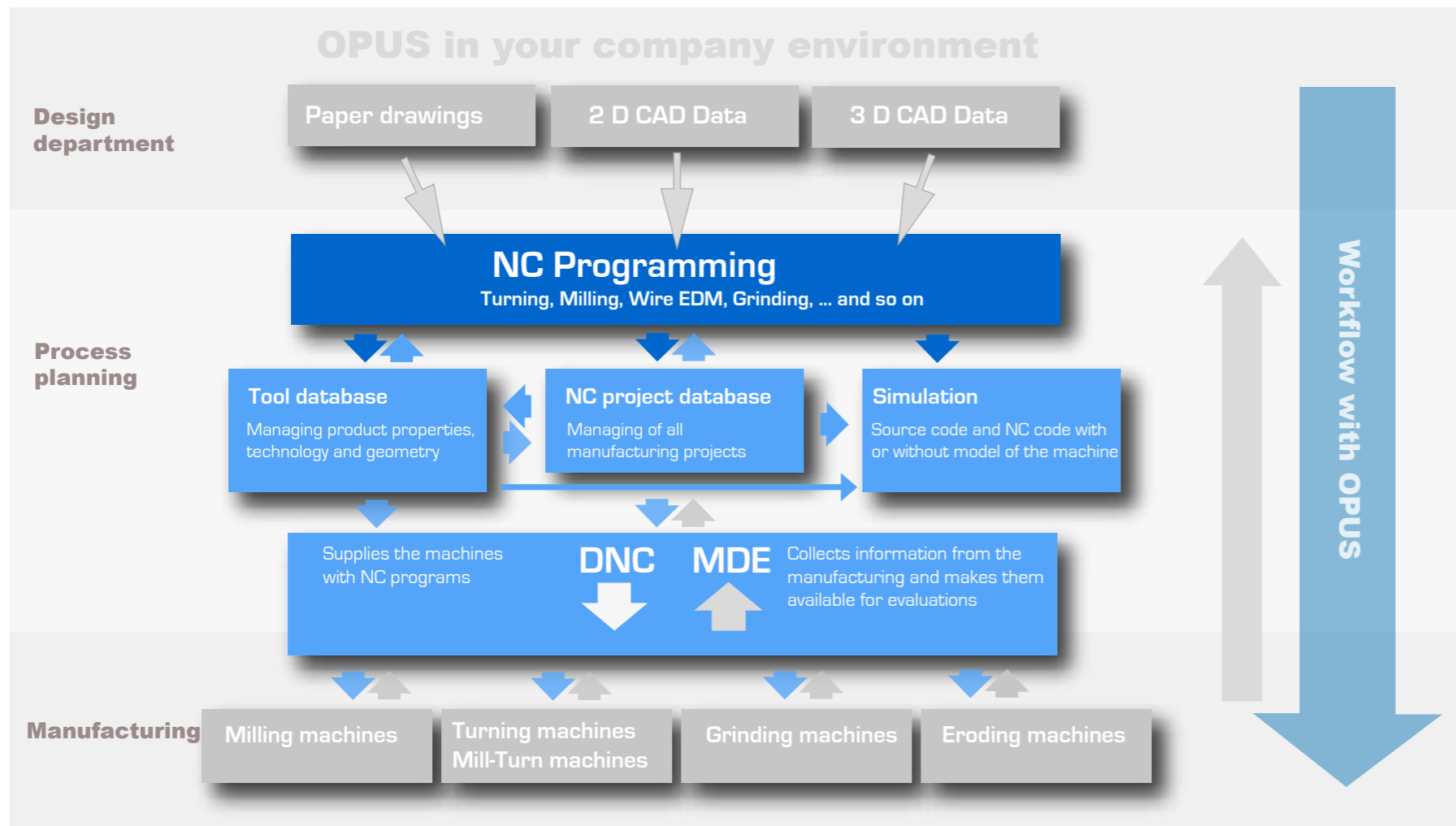
A real integration of the CAM workflow is only realized when all CNC machine tools can be integrated. You finally want to leave the door open for all future options. The OPUS specialists can develop or adapt powerful post-processors also for your machines.

DNC-data transfer

The created NC programs must be transmitted safely and quickly from your PC to the machine. Either you simply use Cu- or fibre-optic cables or you connect your CNC machines via the OPUS COM servers to your company network (LAN Ethernet) and thereby use optimal transmission speed and safety.

Tool management at its finest

In OPUS you can store the product properties, geometry and technological data of your tools. These data are then automatically taken into account when using any tool. The internal geometry functions of OPUS obviate the need of an external CAD system for this.



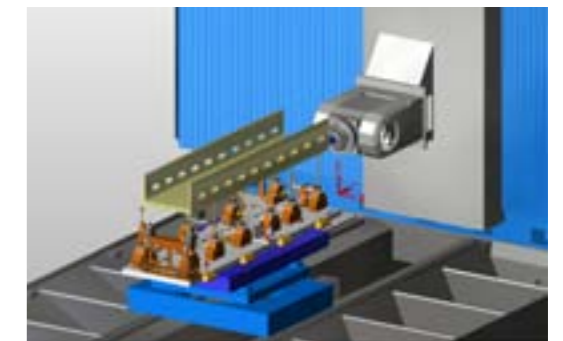
OPUS in the IT Structure of your company



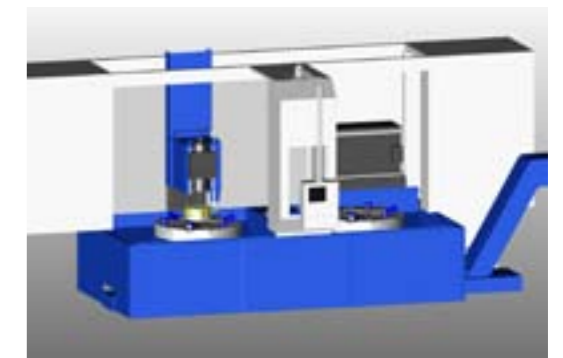
MDE device for detecting the current machine data

OPUS also allows integration with ERP and PPS systems for the order-based production planning. Resource planning in real-time.

By collecting and analyzing machine data, you can determine valuable potential for productivity gains. So existing weak spots can be revealed and eliminated.



One of many: ... e.g. the milling machine of ELHA



... or the Mill-Turn machine of PITTLER.

Clever bits working for you!

OPUS Simulation - leave nothing to be desired!

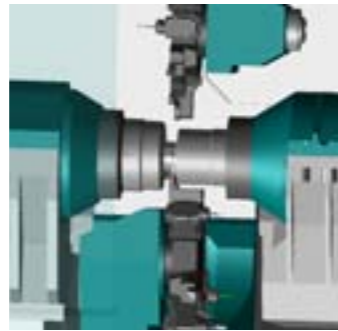
Always the full control

Simulation in each phase is the essential thing for an efficient CAM workflow. This is an immense advantage of OPUS. The pure generation of a NC program is supported by all CAM systems, with more or less comfort. A big point for OPUS are the comfortable simulation options of the created NC programs.

Simulation from the beginning

Even with the basic module you can start a simple source code simulation to check your

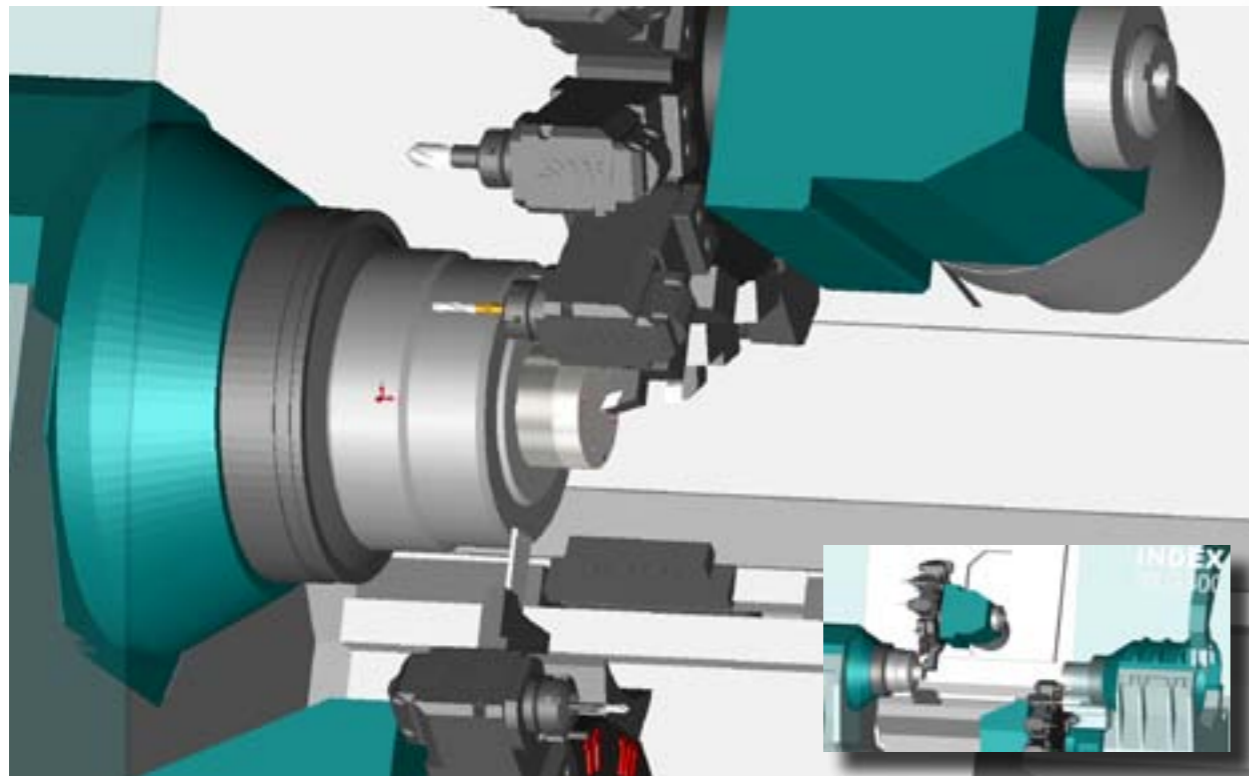
programs just by pressing a key. More powerful modules allow you to run a NC control based simulation of all common CNC machines. And the next step is the complete 3D simulation within the model of



your CNC machine itself.

Here you make your money

The CNC machines in your production are your most expensive parts, and they have to run. With the OPUS 3D simulation in the model of the machine (with NC control interpreter) you can simply avoid expensive and nerve-racking collisions in your productive CNC machines. And this is because you can display the complete machine geometry with the clamping situation, real tools, and so on. Every responsible person for the production lines will appreciate this OPUS features.



4.000 times OPUS !
So many can't be wrong

The OPUS Community is constantly growing

Especially during the last years it came to a world-wide distribution of OPUS. Among our customers you will find companies of all sizes: small, middle and even several real Global Players. That speaks for the very flexible adaptability of OPUS.

It doesn't matter if you use OPUS for small production series or for sample production or for the mass production within a powerful machine park: you will always benefit of the immense savings potential.

Long-term relationship with a reliable software partner

To the most of our customers we have a partner-like relationship for years. Just like a lot of the OPUS employees, also many of our customers remained faithful with OPUS until now.

The OPUS success concept

Openness from every point of view, consistency with a complete integration of all CAM working fields, flexibility at a maximum and a huge number of operation features, which help your employees during their daily work, are the main factors for the big success of OPUS until now. We will keep on this in the future.



... and many others more. You can find a complete list of our references in the internet on www.opus-cam.de. We apologise that we cannot name all of our customers here.